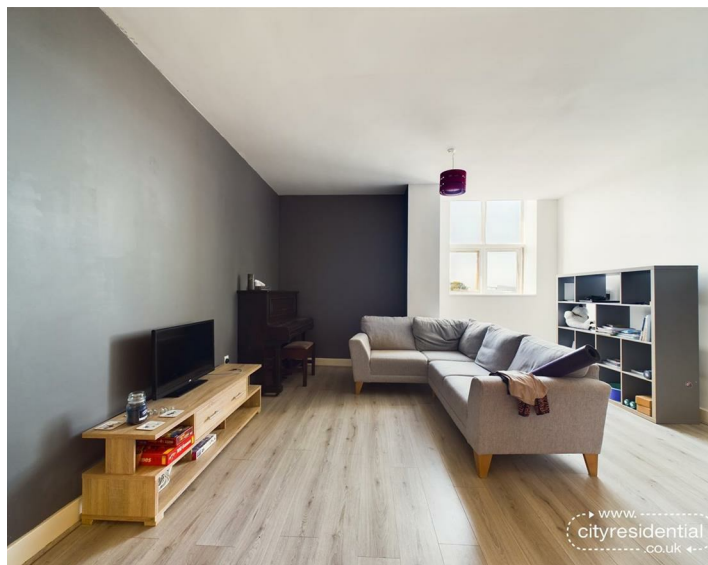




54 Tobacco Wharf 51 Commercial Road, Liverpool, L5 9XB
Asking Price £115,000 Leasehold

www.cityresidential.co.uk



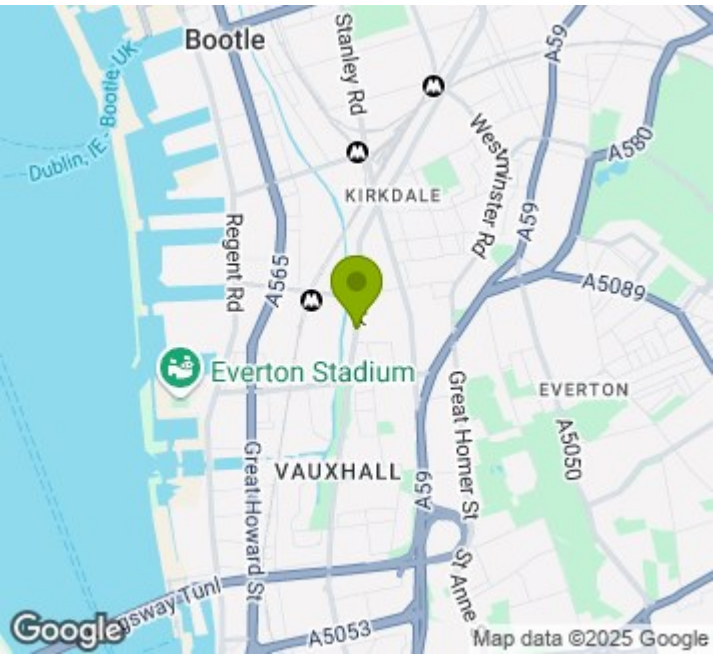
About the Property

Located a stone's throw from the city centre, we are delighted to bring to market this superbly presented two bedroom property at Tobacco Wharf.

With spacious rooms and high ceilings, the canal-side facing property gives a bright and airy feel. The property also benefits from an allocated parking space, useful for those looking to live in close proximity to the city centre, but on the edge of the hustle and bustle.

The property briefly comprises of; entrance hallway, leading onto an open plan kitchen living area, a double master bedroom with ensuite, a further double second bedroom, alongside main bathroom.

We expect the property to sell quickly, so book your viewing early to avoid disappointment!



Energy Efficiency Rating

	Current	Potential
Very energy efficient - lower running costs		
(92 plus) A		
(81-91) B		
(69-80) C		
(55-68) D	55	55
(39-54) E		
(21-38) F		
(1-20) G		
Not energy efficient - higher running costs		
England & Wales	EU Directive 2002/91/EC	

